



## WPS Window Protection System

### Innovative antisqueeze safety for power actuated windows

*Cool down.  
Fire Protection by*

**MINIMAX**

#### Product

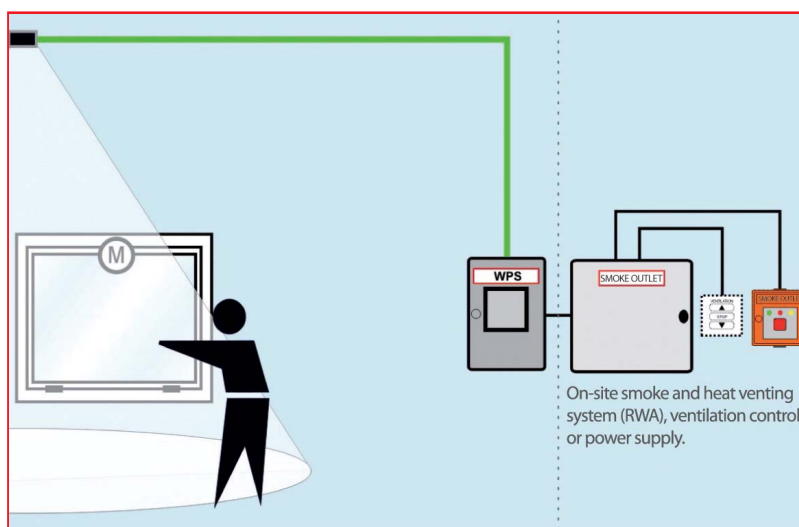
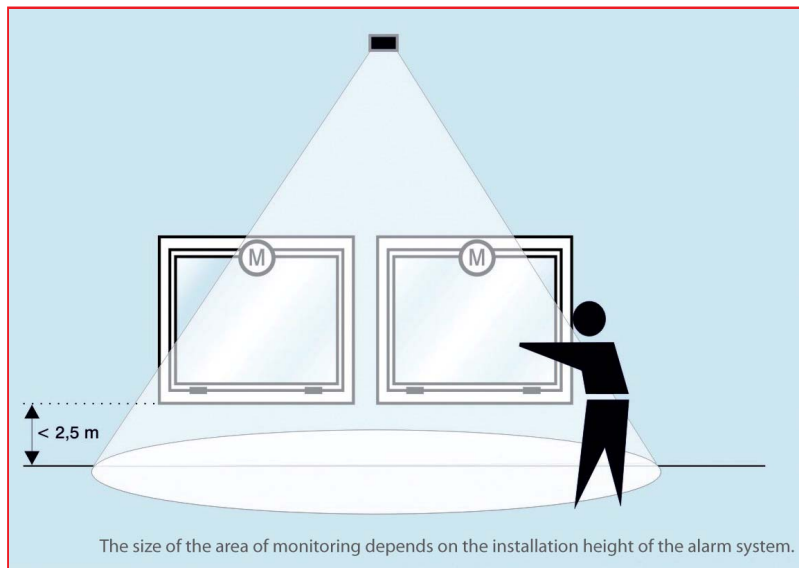
- ▶ WPS is a hand guard for automatically controlled (power driven) windows and lamellae for electrically operated RWA and venting stations. The closing process of the window would be stopped at an early stage, if a person could be jammed.
- ▶ A special sensor monitors the direct clamping points and the danger zone in the whole window surroundings, main and secondary closing edges as well as several adjoining windows.
- ▶ Appropriate for the control and activation of smoke outlets acc. to EN 12101-2 and for the smoke exhaust systems acc. to the current building law (LBO).

#### Application

- ▶ For power driven windows and lamellae, acc. to BGR232, of electrically operated RWA and venting stations
- ▶ The system offers greatest possible protection for low lying windows (installation height or casement lower edge less than 2,5 meters), which are freely accessible (risk level E2)
- ▶ Also recommended for „highly sensitive“ fields of application of risk level N3, for example kindergarten or school

#### Your advantages

- ▶ Reliability and safety at the highest level due to state-of-the-art technology
- ▶ Meets highest protection class requirements (protection class 4, E2; N3; S2) acc. to VFF
- ▶ Fast reaction time in case of an emergency; when entering the area of monitoring the closing process stops automatically and will be continued when leaving
- ▶ huge area of monitoring, individually adjustable, optionally cascable
- ▶ main and secondary closing edges as well as drives are monitored
- ▶ appropriate for all types of windows, applicable independent of facade and window material
- ▶ independent of drive and control manufacturer
- ▶ can be upgraded everywhere without extensive constructional measures
- ▶ quick and uncomplicated maintenance
- ▶ Service by qualified technicians



### ▶ WPS control

Mains voltage: 20-34,5 V DC  
 Line monitoring: possible  
 Number of motor groups: 2  
 Qty. BWM: max. 5 pcs.  
 Switch contacts per group: 8 A  
 Maximum switching capacity: 2 x 8 A  
 Potential-free contacts: 0,5 A  
 Max. 60 V DC  
 Max. window runtime: approx. 180 s  
 Reverse time: approx. 3 seconds  
 delay: 0 to approx. 100 seconds, adjustable  
 Appropriate for RWA: yes  
 Appropriate for venting: yes  
 possibilities: adjustment of the range of functions, power supply, delays and window runtimes.  
 Further functions depend on the version of the software and firmware.  
 Firmware: factory adaptable  
 Ambient temperature range: +5°C to +50°C  
 Installation situation: only for dry rooms  
 Degree of protection: IP40 acc. to DIN 40 050  
 Protection class: class II acc. to DIN EN 61140 (DE 0140-1)

### ▶ WPS motion detector

Field sizes: with slide insert adjustable in three intervals each  
 range: frontal max. 12 m  
 installation height: max. 4 m  
 sensitivity setting: potentiometer  
 Optics/lense: 18 Fesnel lenses  
 Operating voltage: 12-34, 5 VDC  
 Power consumption: approx. 20 mA with 24 VDC  
 Signal output: 1 x potential-free Change over contact  
 Max. switching voltage: 48 V AC/DC  
 Max. switching current: 1 A with 30 V DC  
 Max. switching capacity: 30 W / 60 VA  
 Release delay: 0,5 Sec.  
 Function display: red LED, lights at detection  
 Type of connection: 5 m connection cable  
 Protection class: IP 52 acc. to DIN 40 050  
 Operating temperature: -20°C to +60°C  
 dimensions, incl.bracket: 140 x 34 x 62 mm (width x height x depth)  
 EMV compatibility: acc.to EMV directive 89/336EWG

## Maintenance

▶ Maintenance periodical every 12 months in combination with the RWA station.