



## WPS WINDOW PROTECTION SYSTEM

Innovative antisqueeze safety for power actuated windows

### PRODUCT

- ▶ WPS is a hand guard for automatically controlled (power driven) windows and lamellae for electrically operated RWA and venting stations. The closing process of the window would be stopped at an early stage, if a person could be jammed.
- ▶ A special sensor monitors the direct clamping points and the danger zone in the whole window surroundings, main and secondary closing edges as well as several adjoining windows.
- ▶ Appropriate for the control and activation of smoke outlets acc. to EN 12101-2 and for the smoke exhaust systems acc. to the current building law (LBO).

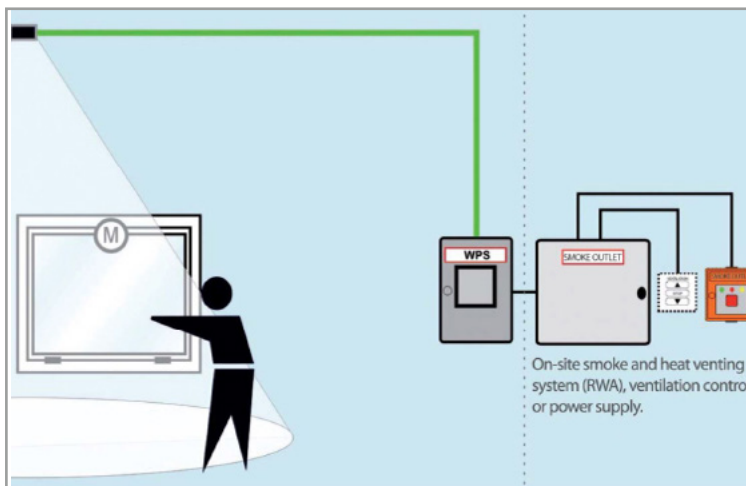
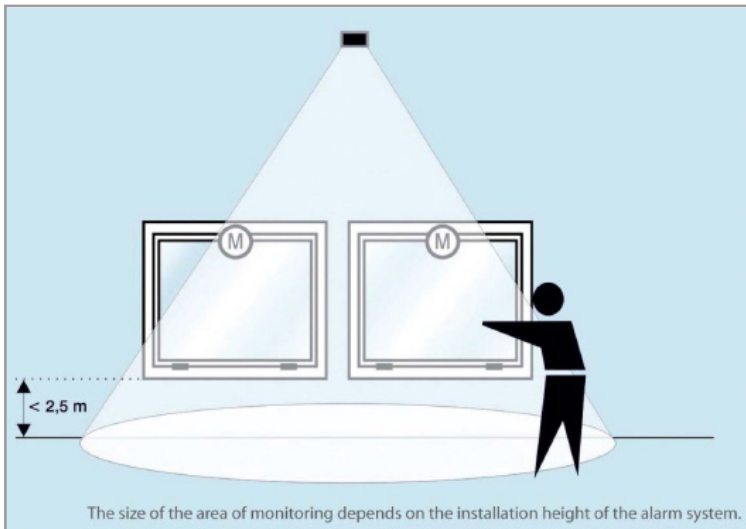
### APPLICATION

- ▶ For power driven windows and lamellae, acc. to ASR A 1.7, of electrically operated RWA and venting stations
- ▶ The system offers greatest possible protection for low lying windows (installation height or casement lower edge less than 2,5 meters), which are freely accessible (risk level E2).
- ▶ Also recommended for „highly sensitive“ fields of application of risk level N3, for example kindergarten or school

### YOUR ADVANTAGES

- ▶ reliability and safety at the highest level due to state-of-the-art technology
- ▶ meets highest protection class requirements (protection class 4, E2; N3; S2) acc. to VFF
- ▶ fast reaction time in case of an emergency; when entering the area of monitoring the closing process stops automatically and will be continued when leaving
- ▶ huge area of monitoring, individually adjustable, optionally cascable
- ▶ main and secondary closing edges as well as drives are monitored
- ▶ appropriate for all types of windows, applicable independent of facade and window material
- ▶ independent of drive and control manufacturer
- ▶ can be upgraded everywhere without extensive constructional measures
- ▶ quick and uncomplicated maintenance
- ▶ service by qualified technicians

## FUNCTION SCHEME



## MAINTENANCE

- ▶ Maintenance periodical every 12 months in combination with the RWA station.

## TECHNICAL DATA

### ▶ WPS control

- mains voltage: 20-34,5 V DC
- line monitoring: possible
- number of motor groups: 2
- qty. BWM: max. 5 pcs.
- switch contacts per group: 8 A
- maximum switching capacity: 2 x 8A
- potential-free contacts: 0,5 A, max. 60 V DC
- max. window runtime: approx. 180 s
- reverse time: approx. 3 seconds
- delay: 0 to approx. 100 seconds, adjustable
- appropriate for RWA: yes
- appropriate for venting: yes
- possibilities: adjustment of the range of functions, power supply, delays and window runtimes.

Further functions depend on the version of the software and firmware.

- firmware: factory adaptable
- ambient temperature range: +5 °C to +50 °C
- installation situation: only for dry rooms
- degree of protection: IP40 acc. to DIN 40 050
- protection class: class II acc. to DIN EN 61 140 (DE 0140-1)

### ▶ WPS motion detector

- field sizes: with slide insert adjustable in three intervals each
- range: frontal max. 12 m
- installation height: max. 4 m
- sensitivity setting: potentiometer
- optics/lense: 18 Fesnel lenses
- operating voltage: 12-34, 5 V DC
- power consumption: approx. 20 mA with 24 V DC
- signal output: 1 x potential-free change over contact
- max. switching voltage: 48 V AC/DC
- max. switching current: 1 A with 30 V DC
- max. switching capacity: 30 W / 60 VA
- release delay: 0,5 sec.
- function display: red LED, lights at detection
- type of connection: 5 m connection cable
- protection class: IP 52 acc. to DIN 40 050
- operating temperature: -20 °C to +60 °C
- dimensions, incl. bracket: 140 x 34 x 62 mm (width x height x depth)
- EMV compatibility: acc. to EMV directive 89/336EWG

Minimax Mobile Services GmbH  
 Export Department  
 Minimaxstraße 1  
 D-72574 Bad Urach  
 Tel.: +49 (0)7125 154-216  
 Fax: +49 (0)7125 154-166  
 E-Mail: zentrale@minimax.de  
 www.minimax-mobile.com  
[www.facebook.com/MinimaxMobileServices](https://www.facebook.com/MinimaxMobileServices)

